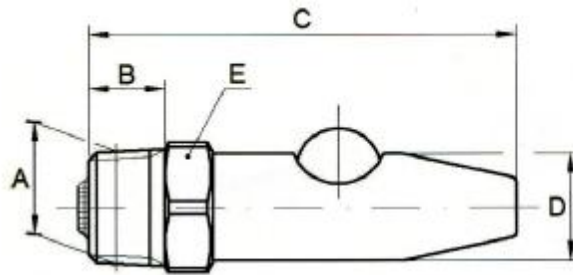


## Recommendations/Definitions

No. of animals per valve: 10

- R = European pipe thread
- HP = High pressure 200-400 kPa (2-4 bar)
- SS/BR = Stainless steel sleeve and brass body
- SS = Stainless steel sleeve and body



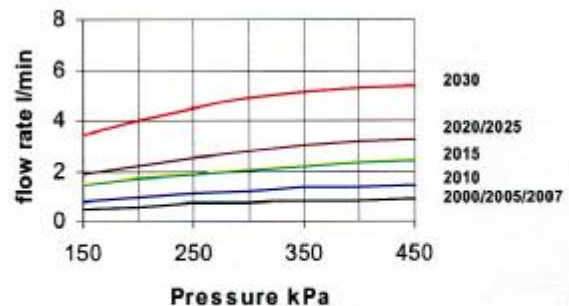
## Measurement/weight

Part No.			Measure in mm, weight in kg						
SSBR	SS	Description	DN	A	B	C	D	E	Weight
2000	2100	Bite ball valve for piglets	10	R 3/8"	11	61	16	17	0,05
2005	2105	Bite ball valve for piglets	15	R 1/2"	14	66	16	22	0,08
2007	2107	Bite ball valve for piglets - trainer	15	R 1/2"	14	66	16	22	0,08
2010	2110	Bite ball valve for fatteners and calves	15	R 1/2"	14	79	20	22	0,12
2015	2115	Bite ball valve for sow s	15	R 1/2"	14	79	20	22	0,12
2020	2120	Bite ball valve for sow s and young cattle	20	R 3/4"	16	97	25	27	0,22
2025	2125	Bite ball valve for sow s and young cattle	15	R 1/2"	14	94	25	27	0,19
2030	2130	Bite ball valve for beef cattle	25	R 1"	18	115	30	34	0,36

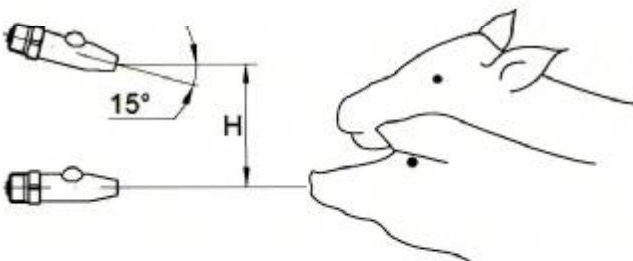
## Flow rate

1 kPa = 0,01 bar

Pressure kPa	Flow rate l/min							
	2000 2100	2005 2105	2007 2107	2010 2110	2015 2115	2020 2120	2025 2125	2030 2130
150	0,50	0,50	0,50	0,85	1,45	1,85	1,85	3,45
200	0,60	0,60	0,60	1,00	1,70	2,20	2,20	4,00
250	0,70	0,70	0,70	1,15	1,90	2,50	2,50	4,50
300	0,75	0,75	0,75	1,25	2,05	2,75	2,75	4,90
350	0,80	0,80	0,80	1,35	2,20	3,00	3,00	5,15
400	0,85	0,85	0,85	1,40	2,35	3,15	3,15	5,30
450	0,90	0,90	0,90	1,45	2,45	3,30	3,30	5,40

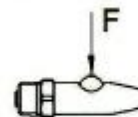


## Installation



H in mm							
2000 2100	2005 2105	2007 2107	2010 2110	2015 2115	2020 2120	2025 2125	2030 2130
50	50	50	100	150	150	150	250

## Opening force



Force in N at 300 kPa (1 N = 0,102 kp)							
2000 2100	2005 2105	2007 2107	2010 2110	2015 2115	2020 2120	2025 2125	2030 2130
5,0	5,0	5,0	7,5	7,5	11,8	11,8	21,0